

HARTMANN TRESORE



GUN SAFES

Huntsmen - Sporting marksmen - Collectors

... at your disposal - with security!

HARTMANN



TRESORE AG & Cie.

Paderborn • Berlin • Düsseldorf • Köln • Hamburg • Frankfurt • Mailand • Paris • Straßburg • Den Haag • Warschau

TABLE OF CONTENTS

Page	Model range	Security grade
HARTMANN RIFLE CABINETS		
4	WT 080 / WT 100	Security grade A
5	WT 101	Security grade A
6	WT 083	Security grade B
7	WT 084	Security grade B
8	WT 200 / WT 085	Security grade B
9	WT 087	Security grade B
10,11	WT 250	VdS class N (0)
12	WTS	VdS class N (0)
13	WT 285	VdS class I
14	WT 270	VdS class I
15	WT 297	VdS class I + S 60 P
15	WT 298	VdS class II + S 60 P
16	WT 300	VdS class I + S 120 P
16	WT 310	VdS class II + S 120 P
17	HARTMANN OAK CABINETS	
HARTMANN PISTOL SAFES		
18	WS 165	VdS class N (0)
18	WS 175	VdS class I
HARTMANN SHORT WEAPON CABINETS		
18	K 102 K	Security grade B
HARTMANN AMMUNITION SAFES		
19	WS 125	Security grade A
20,21	HARTMANN STRONGROOM DOORS	
21	HARTMANN ROOM-IN-ROOM SYSTEMS	
HARTMANN Exclusive Line		
22-25	HARTMANN BULLETPROOF GLASS SAFES	
26-27	HARTMANN AIRBRUSH SAFES and other	
28	HARTMANN PRODUCT OVERVIEW	
29	Accessories	
30	§ - The Gun-Control Law	
31	References	

HARTMANN TRESORE AG & Cie.

HARTMANN TRESORE AG & Cie is a modern company, accrued from long-standing handicraft tradition. More than 200 years ago, the ,blacksmith and cartwright company Hartmann' has been founded in Westphalia. We are proud of the today's steel-frame building facility being still in family ownership. In 1983, Christoph and Heinrich Hartmann founded the company HARTMANN TRESORE, a company meeting the challenges of a long-standing tradition. Innovative ideas and expertise – a combination you can rely on. HARTMANN - performance by experience.

Security with system

For the security of all objects being important and valuable to you we do not only offer a safe, but a complete security package.



Our security package for you:

Quality

Our safes distinguish themselves by utilization of high-grade materials and high precision in manufacturing, in compliance with the rigid security demands of the VDMA (German Association of mechanical engineering and plant manufacturing) and the VdS (German association of damage insurers), respectively, according to the EURO standard. This is of great actuarial importance to you. For us, quality is a basic prerequisite!

Service

„It can't be done – that can't be true!“ This company motto is a matter of old-established tradition in our company. The acquisition of a security system needs individual, discreet advice and customer care. We are aware of that! From the very first non-binding consulting to the complete planning and realization we'll give you competent support. Our customer service will care for you even a long time after the purchase.

Price-Performance Ratio

It is our objective to achieve an optimum price-performance ratio for you. That's why – despite of our high quality demands – we pay special attention to price-conscious purchasing and efficient manufacturing of our safes. Security at trustworthy conditions!

Give us a call or visit one of our exhibitions.

We are at your disposal – with security!

HARTMANN TRESORE AG & Cie.

-HEADQUARTERS-

Am Ziegenberg 3
 33106 Paderborn
 Germany
 Phone +49 (0) 52 51 - 17 44 -0
 Fax +49 (0) 52 51 - 17 44 -99
 www.waffenschraenke.de
 info@waffenschraenke.de



Tested security

Our rifle cabinets and safes comply with the high German security standards as well as the European standards. They are tested by recognized and independent testing institutes for protection against burglary and fire and are given the corresponding testing badges.

Fire protection

Steel cabinets of security grade A are already more secure than a normal living cabinet or wardrobe, for example.

With cabinets of security grade B the heat generation inside the safe is considerably reduced by means of a fire protection insulation and a surrounding edged fire fold. In many cases, this is sufficient. As per statistics, in case of fire the fire brigade arrives on the spot within 27 minutes on average. However, it is important that only fire-tested safes or rifle cabinets, respectively, are fire-proof.

Tested fire protection

After having been exposed to flames over a period of 60 min./120 min. at 1090 °C the safe is – in still hot condition - made subject to a shatter test from a height of 9.15 m. Once the prototype has passed the test, the safe series will get the testing badge acc. to RAL RG 626/7



Safe after exposure to flames



Fall from a height of 9.15 m

Security grades, -characteristic, -standards

Model line	Security grade	Short description	Security characteristics	Insurance rating* in €
WT 080 WT 100 WT 101 WS 125	security grade A acc. to VDMA 24992** interior safe partly in security grade B	Door double-, body single-walled	limited burglary protection	private and commercial 2.500,-* €
WT 083 WT 084 WT 200 WT 085 WT 087 K 102 K	security grade B acc. to VDMA 24992** fire protection	Door and body double- and triple-walled, respectively, surrounding edged fire fold	limited burglary protection, fire protection	from 200 kg private 37.500,-* € from 300 kg commercial 10.000,-* €
WT 250 WTS WS 165	Euro standard VdS class N (0)	Door and body multiwalled, surrounding edged fire fold	tested burglary protection, guaranteed resistance unit	private 50.000,-* € commercial 20.000,-* €
WT 285 WT 270 WS 175	Euro standard VdS class I	Door and body multiwalled, door with special filling, surrounding edged fire fold	tested burglary protection, resistance unit RU 30/50	private 65.000,-* € commercial 20.000,-* €
WT 297	Euro standard VdS I + S 60 P RAL RG 626/7	Door and body multiwalled with special filling, multi-layer edged fire fold	tested burglary protection, fire protection S 60 P	private 65.000,-* € commercial 20.000,-* €
WT 300	Euro standard VdS I + S 120 P RAL RG 626/7	Door and body multiwalled with special concrete filling, multi-layer edged fire fold	tested burglary protection, fire protection S 120 P	private 65.000,-* € commercial 20.000,-* € + against fire
WT 298	Euro standard VdS II + S 60 P RAL RG 626/7	Door and body multiwalled with special filling, multi-layer edged fire fold	tested burglary protection, fire protection S 60 P	private 100.000,-* € commercial 50.000,-* € + against fire
WT 310	Euro standard VdS II + S 120 P RAL RG 626/7	Door and body multiwalled with special concrete filling, multi-layer edged fire fold	tested burglary protection, fire protection S 120 P	private 100.000,-* € commercial 50.000,-* € + against fire

* The sums insured as indicated are non-binding guide values for Germany. ** As of 05/95



WT 080-02



WT 080-04



WT 080-03



WT 080-06



WT 100-07

**with interior safe
of security grade B**

HARTMANN RIFLE CABINET SERIES WT 080

Insurance rating, private and commercial: 2,500.00* €

For secure storage of your long weapons

Security grade A acc. to VDMA standard sheet 24992**

Model	Overall dimensions (H x W x D) mm	Inner dimensions (H x W x D) mm	Weight kg	Setting height mm	Rifle holders
WT 080-01	1350 x 230 x 320	1344 x 224 x 257	50	1230	3
WT 080-02	1400 x 250 x 320	1394 x 244 x 257	54	1230	5 (2/3)
WT 080-03	1400 x 320 x 320	1394 x 314 x 257	62	1230	7 (3/4)
WT 080-04	1400 x 480 x 320	1394 x 474 x 257	87	1230	7 (3/4)
WT 080-06	1400 x 640 x 320	1394 x 634 x 257	107	1230	7 (3/4)

Single-walled steel cabinet, door and body 3 mm steel

Door double-walled, 3-side bolt locking, interior safe 100 mm high with WT 080-01, 160 mm with all other models. The rifles are set one behind the other.

So, the rifles in front have to be removed to get access to those at the back.

HARTMANN RIFLE CABINET SERIES WT 100

with interior safe of security grade B

Insurance rating, private and commercial: 2,500.00* €

For secure storage of your long weapons and of the short weapons in the interior safe

Security grade A acc. to VDMA standard sheet 24992**

Model	Overall dimensions (H x W x D) mm	Inner dimensions (H x W x D) mm	Weight kg	Setting height mm	Rifle holders
WT 100-02	1400 x 350 x 350	1394 x 344 x 278	85	1230	6
WT 100-04	1400 x 500 x 350	1394 x 494 x 278	105	1230	8
WT 100-06	1400 x 700 x 350	1394 x 694 x 278	135	1230	12
WT 100-07	1500 x 550 x 350	1494 x 544 x 278	140	1230	6

Single-walled steel cabinet, body 3 mm steel, door double-walled, door leaf 6 mm solid steel, 3-side bolt locking, bolt dia 25 mm. Height of interior safe 170 mm; WT 100-07 260 mm. All interior safes of security grade B, double-walled, thickness of door and body 30 mm.

Double-beard lock; with 2 keys



WT 100-02



WT 100-04



WT 100-06

HARTMANN RIFLE CABINET SERIES WT 101

with double-walled interior safe of security grade B
Insurance rating, private and commercial: 2,500.00* €

The solution for secure storage of your long and short weapons. This rifle cabinet is standard-equipped with a large double-walled interior safe of security grade B, thus definitely suitable for short weapons.

From model WT 101-04 onwards even files and scrapbooks will find a secure storage place.

WT 101-04 and WT 101-05 with unscrewable partitions for extension of the rifle setting quantity.

Security grade A acc. to VDMA standard sheet 24992**

Model	Overall dimensions (H x W x D) mm	Inner dimensions (H x W x D) mm	Weight kg	Setting height mm	Rifle holders
WT 101-01	1600 x 400 x 350	1594 x 394 x 287	100	1294	6
WT 101-02	1600 x 550 x 350	1594 x 544 x 287	130	1294	8
WT 101-04	1700 x 600 x 400	1694 x 594 x 337	160	1294	5/9
WT 101-05	1700 x 800 x 400	1694 x 794 x 337	180	1294	8/12

Single-walled steel cabinet, body 3 mm steel, door double-walled, thickness 60 mm, door leaf 6 mm solid steel, armoring plate in the lock area, 3-side bolt locking, bolt dia 25 mm. Height of interior safe with WT 101-01 and WT 101-02 approx. 300 mm; with WT 101-04 and WT 101-05 even 400 mm (file height!).

Standard interior safe of security grade B, thickness of door and body 30 mm, with special fire protection insulation. Double-beard lock with 2 keys.



WT 101-01



WT 101-02

HARTMANN TRESORE is
the official supplier
of the DSB
(German Union
for Marksmen)
and its national team



**Ideal also for
sporting marksmen:**

Large interior safe offering much space
for short weapons and/or ammunition

Our tip for locking:

Our rifle cabinets are equipped with VdS-listed high-security double-beard locks, two keys included.

Advantage of the new guidelines:

Precisely defined, obviously higher security of the lock area

Disadvantage:

Keys can get lost. If one key got lost, the total lock will have to be exchanged!

Our tip:

Get your safe equipped with an electronic combination lock to be independent from the key. The door can be opened any time quickly and easily. You'll just have to enter your digit code.

**WT 101-04 /-05
with interior safe
400 mm in height
of security grade B**



WT 101-04



WT 101-05

**Special equipment
locking variations**

- Mechanical combination lock
- Electronic pushbutton lock



WT 083-01



WT 083-02

WT 083-02
 with variable
 interior fittings
 with 5 + 3 rifle holders



WT 083-09



WT 083-10

HARTMANN FURNITURE INSERTION SAFE SERIES WT 083

door and body double-walled

The series WT 083 is available as a furniture insertion safe in light construction having a weight of less than 200 kg.

You will get a product of proven HARTMANN quality, enjoy our service and the warranties and you won't pay more than with so-called cut-price suppliers. Also in this case we have not renounced to present a rifle cabinet with interesting internals. The series WT 083 is intended for being inserted into existing furniture. Just decide by yourself if the safe should be used exclusively as a rifle cabinet or if important documents should be stored in the shelves.

The WT 083 can be altered with a flick of the wrist.

The variation possibilities are included in the scope of delivery.

Furniture insertion safe of security grade B acc. to VDMA standard sheet 24992**

Model	Overall dimensions (H x W x D) mm	Inner dimensions (H x W x D) mm	Weight kg	Setting height mm	Rifle holders
WT 083-01	1500 x 425 x 380	1440 x 365 x 300	115	1240	6
WT 083-02	1500 x 500 x 390	1440 x 440 x 310	137	1240	5/8
WT 083-09	1600 x 550 x 390	1540 x 490 x 310	142	1330	9
WT 083-10	1600 x 550 x 390	1540 x 490 x 310	150	1330	6/9

Double-walled steel cabinet, body 30 mm, door 50 mm, door leaf of solid steel, bore-proof armouring plate in the lock area, special bolt locking, aperture angle of door 90°.

WT 083-02 with 5 rifle holders, partition and 3 shelves, alterable on your own to 8 rifle holders. Partition fixed.

WT 083-10 with 6 or 9 rifle holders, respectively. Height of interior safe: 200 mm.

Top price-performance ratio!

Ideal also for sporting marksmen:

- Security grade B
- Space-saving by low overall dimensions
- Suitable for insertion into almost every cabinet by low weight
- Large interior safe for short weapons or ammunition

HARTMANN TRESORE is
 the official supplier
 of the DSB
 (German Union for
 Marksmen)
 and its national team



- **Special equipment locking variations**
- - Mechanical combination lock
- - Electronic pushbutton lock



HARTMANN RIFLE CABINET SERIES WT 084

door and body double-walled – fire protection insulation

Insurance rating, private: up to 37,500.00* €

With this series, we renounced all superfluous extras. However, the demands of the VDMA are met and you'll pay a minimum price for a 'Security B Cabinet'. You will get a product of proven HARTMANN quality, enjoy our service and the warranties and you won't pay more than with so-called cut-price suppliers.

And even with this rifle cabinet series we didn't want to renounce to present a rifle cabinet with interesting internals.

The model WT 084-04 is an effective example for variable internal divisions.

All variation possibilities are included in the scope of delivery.

Not included, but worth considering as a meaningful supplement, is an electronic lock being very good value as well.

Security grade B acc. to VDMA standard sheet 24992**

Model	Overall dimensions (H x W x D) mm	Inner dimensions (H x W x D) mm	Weight kg	Setting height mm	Rifle holders
WT 084-01	1500 x 415 x 410	1380 x 295 x 280	200	1230	5
WT 084-02	1500 x 530 x 410	1380 x 410 x 290	200	1230	7
WT 084-03	1500 x 650 x 410	1380 x 530 x 290	200	1230	9
WT 084-04	1500 x 810 x 430	1380 x 690 x 300	200	1230	4/8/12
WT 084-05	1500 x 510 x 410	1380 x 390 x 290	200	1230	7

Double-walled steel cabinet, body and door double-walled, thickness 60 mm, door leaf 4 mm solid steel. bore-proof armouring plate in the lock area, bolt locking, aperture angle of door 90°, height of interior safe 150 mm.

WT 084-04 with 4 plus 8 rifle holders and 3 or 6 shelves, respectively. Included in the scope of delivery are 2 rails with 1 x 4 and 1 x 8 rifle holders, which you can easily fasten at the back wall, and 6 shelves in total, the partition is fixed. For individual space division several possibilities are open to you (see pictures below).

WT 084-04 - Variable like no more other!



WT 084-04

WT 084-04
4 cabinets in one!



WT 084-02



WT 084-03



WT 084-05

- **Special equipment locking variations**
- - Mechanical combination lock
- - Electronic pushbutton lock

WT 200-02
with unscrewable
partition extendable
to 10 rifle holders



WT 200-01



WT 200-02



WT 085-02

WT 085-02
with 3 separate
interior safes each
360 mm in height



WT 085-10

HARTMANN RIFLE CABINET SERIES WT 200

door and body double-walled – fire protection insulation
Insurance rating, private: up to 37,500.00* €

By very low overall depth perfect for inserting into a cabinet.

The WT 200-02 has a fixture with 5 rifle holders fixed at the back wall, a second fixture and 3 shelves are enclosed. With the shelves part you'll have a safe for valuables suitable for files, important documents and, of course, your valuable rifles. Extend your rifle cabinet by putting the 2nd rifle fixture on its hinges.

Security grade B acc. to VDMA standard sheet 24992**

Model	Overall dimensions (H x W x D) mm	Inner dimensions (H x W x D) mm	Weight kg	Setting height mm	Rifle holders
WT 200-01	1600 x 470 x 450	1480 x 350 x 330	205	1230	6
WT 200-02	1600 x 705 x 450	1480 x 585 x 330	210	1230	5/10

Double-walled steel cabinet, body and door double-walled, thickness 60 mm, fire protection insulation. Door leaf 6 mm solid steel. bore-proof armouring plate in the lock area. 3-side bolt locking. Aperture angle of door 90°. Height of interior safe 250 mm

WT 200-02 with unscrewable partition and 3 shelves.

HARTMANN RIFLE CABINET SERIES WT 085

door and body double-walled – fire protection insulation
Insurance rating, private: up to 37,500.00* €

WT 085-10 with many extras. You can either use your cabinet as a combined rifle cabinet and file safe, which also offers a good fire protection by means of the fire protection insulation – or you remove the shelves and extend the space for your rifle collection by four more setting places.

WT 085-02 also equipped with many extras.

Security grade B acc. to VDMA standard sheet 24992**

Model	Overall dimensions (H x W x D) mm	Inner dimensions (H x W x D) mm	Weight kg	Setting height mm	Rifle holders
WT 085-02	1750 x 800 x 500	1630 x 680 x 380	245	1270	8
WT 085-10	1600 x 750 x 430	1480 x 630 x 310	200	1230/1330	6/10

Double-walled steel cabinet, body and door thickness 60 mm. Door leaf 6 mm solid steel. Bore-proof armouring plate in the lock area. Aperture angle of door 90°. Edged fire fold. Fire protection insulation.

WT 085-10 with partition, 3 shelves and rail with 4 additional rifle holders. 2 interior safes: height 150 mm and 250 mm, 3 door compartments.

WT 085-02 with 3 interior safes, separately lockable, each 360 mm in height (file height). 3 shelves and 3 door compartments..

Special equipment locking variations

- - Mechanical combination lock
- - electronic pushbutton lock



HARTMANN RIFLE CABINET SERIES WT 087

door triple- and body double-walled – fire protection insulation

Insurance rating, private: up to 37,500.00* €

Security grade B acc. to VDMA standard sheet 24992**

Model	Overall dimensions (H x W x D) mm	Inner dimensions (H x W x D) mm	Weight kg	Setting height mm	Rifle holders
WT 087-01	1650 x 770 x 500	1530 x 650 x 340	232	1330	7/11
WT 087-02	1650 x 1260 x 600	1530 x 1140 x 440	379	1330	16
WT 087-03	1500 x 700 x 500	1380 x 580 x 340	200	1230	13
WT 087-04	1500 x 700 x 500	1380 x 580 x 350	205	1230	6
WT 087-07	1650 x 640 x 500	1530 x 520 x 335	205	1280	8
WT 087-08	1600 x 990 x 550	1480 x 870 x 390	273	1280	15/19
WT 087-09	1600 x 990 x 550	1480 x 870 x 390	279	1280	12/16
WT 087-10	1650 x 900 x 500	1530 x 780 x 340	260	1330	18
WT 087-11	1650 x 900 x 500	1530 x 780 x 340	260	1330	14/18
WT 087-12	1520 x 500 x 500	1400 x 370 x 330	200	1250	6
WT 087-20	1650 x 770 x 600	1530 x 650 x 440	250	1320	7/11
WT 087-22	1800 x 770 x 600	1680 x 650 x 440	280	1300	7/11

Multi-walled safe. Especially strong construction. Body 60 mm. 3-walled door, 105 mm. Lock area bore-proof. 3-side bolt locking, in addition solid bolts and backbolts on the hinge side. Aperture angle of door 180°. Surrounding edged fire fold. Fire protection insulation.

WT 087-01: 7 rifle holders + 3 shelves, partition, rifle holder rail with 4 additional holders. 2 interior safes, 200 mm each.

WT 087-02: two separately closing safe doors!

Safe on the left: 16 rifle holders, 9 of which at the back wall, 7 at the swivel wall. 1 interior safe, 200 mm.

Safe on the right: 3 shelves, 2 separate interior safes in file height, 360 mm each.

WT 087-03: 9 rifle holders at the back wall, 2 each on the left and on the right.

WT 087-08: 15 holders at the back wall, 2 each at the side walls

WT 087-09: 10 rifle holders at the back, 2 at the left side wall, partition, on the right space for 3 shelves or 4 more rifle holders.

WT 087-10: 14 rifle holders at the back wall, 2 each on the left and on the right.

WT 087-11: like WT 087-10, but with unscrewable partition and 3 shelves.

WT 087-20/-22

also available as a swivel wall safe with up to 20 rifle holders



WT 087-01



WT 087-02

with 3 separate interior safes

Special equipment locking variations

- Mechanical combination lock
- electronic pushbutton lock



WT 087-12



WT 087-11

Holder for cleaning rods and 3 door compartments included



WT 087-10



WT 087-03



WT 087-04



WT 250-01



WT 250-04



WT 250-22

■ **Special equipment locking variations**

- - Mechanical combination lock
- - Electronic pushbutton lock

HARTMANN RIFLE CABINET SERIES WT 250

with VdS testing badge. Door and body four-walled – fire protection insulation Insurance rating, private: up to 50,000.00* €

HARTMANN rifle cabinets comply with the new guidelines. The proved line of products WT 087 (security grade B) is now being offered by us as series WT 250 in the new class N (0) with VdS testing badge. With equal inner and overall dimensions the weights increase because of reinforced wall and door construction. Many extras make these series even more interesting. For example, the externally placed hinges, thus facilitating taking doors off their hinges and, as a result, transports over stairs and relocation (especially important for the 2-door cabinets).

Resistance unit N (0) with VdS testing badge

Model	Overall dimensions (H x W x D) mm	Inner dimensions (H x W x D) mm	Weight kg	Setting height mm	Rifle holders
WT 250-01	1650 x 770 x 500	1530 x 650 x 340	340	1330	7/11
WT 250-02.1/-2	1650 x 1350 x 600	à 1530 x 555 x 430	à 342,5	1330	9/7
WT 250-03	1500 x 700 x 500	1380 x 580 x 340	290	1230	13
WT 250-04	1500 x 700 x 500	1380 x 580 x 340	290	1230	6
WT 250-07	1650 x 640 x 500	1530 x 520 x 340	295	1280	8
WT 250-08	1600 x 990 x 550	1480 x 870 x 390	450	1280	19
WT 250-09	1600 x 990 x 550	1480 x 870 x 390	430	1280	12/16
WT 250-10	1650 x 900 x 500	1530 x 780 x 340	370	1330	14/18
WT 250-11	1650 x 900 x 500	1530 x 780 x 340	360	1330	14/18
WT 250-12	1520 x 500 x 500	1400 x 370 x 330	245	1250	6
WT 250-20	1650 x 770 x 600	1530 x 650 x 440	365	1320	7/11
					Rifle holders with small swivel wall with/without shelves part :: 12/16
					Rifle holders with large swivel wall : 20
WT 250-22	1800 x 770 x 600	1680 x 650 x 440	420	1300	7/11
					Rifle holders with small swivel wall with/without shelves part : 12/16
					Rifle holders with large swivel wall : 20
WT 250-24	1500 x 750 x 500	1380 x 620 x 330	300	1380	9

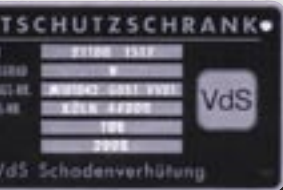
Multi-walled safe. Especially strong construction. Body 60 mm. 3-walled door, 105 mm. Lock area bore-proof. 3-side bolt locking, in addition solid bolts and backbolts on the hinge side. Aperture angle of door 180°. Surrounding edged fire fold. Fire protection insulation DIN 4102.

WT 250-01: 7 rifle holders + 3 shelves, partition, in addition 4 more rifle holders. 2 separately closing interior safes, 200 mm each. WT 250-02: 2 two separately closing safe doors! Safe on the left: 16 rifle holders, 9 of which at the back wall, 7 at the swivel wall. Interior safe, 200 mm. Safe on the right: 3 shelves, 2 separate interior safes in file height, 360 mm each. WT 250-08: 15 holders at the back wall, 2 each at the side walls. WT 250-09: 10 rifle holders at the back, 2 at the left side wall, partition, on the right space for 3 shelves or 4 more rifle holders. WT 250-10: 14 rifle holders at the back wall, 2 each on the left and on the right. WT 250-11: like WT 250-10, but with unscrewable partition and 3 shelves.

WT 250-24: with 9 rifle holders, height-adjustable shelf above the rifle part and spacious shelves part with 3 height-adjustable shelves; 3 door compartments and holder for cleaning rods.

WT 250-20 /-22
available as a swivel wall safe
with up to 20 rifle holders





Euro Standard VdS
Security class N (0)

Interior safe height, mm	Shelves
2 à 200	3
200/ 2 à 360	4
150	-
150	3
250	1
200	-
200	3
2 à 200	-
2 à 200	3
150	-
2 à 200	3
2 à 370	3
-	3



WT 250-08



WT 250-09



WT 250-07

with externally placed hinges



WT 250-24



WT 250-02

WT 250-02.1/.2
optionally available in screwed or welded construction

New: Mini
VdS N (0)
cabinet



WT 250-12

WT 250-10



WTS 1304

with special door
of 125 mm thickness



WTS 1204

HARTMANN RIFLE CABINET SERIES WTS

with VdS testing badge. Door and body four-walled – fire protection insulation
Insurance rating, private: up to 50,000.00* €

Safes for valuables of the new generation!

The VdS standard guarantees defined security. Thorough tests and tightened burglary attempts in a testing institute of the VdS precede the stage of production, which itself on the other hand is also subject to a continuous external quality monitoring.

The approval once passed by the VdS is only issued on a fixed term basis, so that the topical threatening situation is taken into account.

The series WTS 1204 up to WTS 1404 distinguish themselves by an especially solid construction. The four-walled special door with a thickness of 125 mm and the three-walled body guarantee security of highest standards.

Resistance unit N (0) with VdS testing badge

Model	Overall dimensions (H x W x D) mm	Inner dimensions (H x W x D) mm	Weight kg	Setting height mm	Rifle holders
WTS 1204	1500 x 550 x 500	1350 x 400 x 300	230	1200	7
WTS 1304	1500 x 750 x 550	1350 x 600 x 350	300	1200	7/10
WTS 1404	1700 x 750 x 550	1550 x 600 x 350	330	1200	7/10

Steel cabinet with three-walled body and integrated web profile reinforcements. Door four-walled, thickness 125 mm. Additional safeguarding in the lock area by armoured plates. Bolt locking. Aperture angle of door 180°. 1 interior safe, height 150 mm. Holder for cleaning rods. WTS 1304/1404 with 7 plus 3 rifle holders and 3 adjustable shelves, included in the scope of delivery are 2 rails with 1 x 7 and 1 x 3 rifle holders, which you can easily fasten at the back wall, and 3 shelves in total. The partition is unscrewable. In addition, WTS 1304/1404 are equipped with 3 door compartments and holders for cleaning rods. Device for floor anchoring.



**Euro Standard VdS
Security class N (0)**

- **Special equipment locking variations**
- - Mechanical combination lock
- - Electronic pushbutton lock

HARTMANN RIFLE CABINET SERIES WT 285

Insurance rating, private: up to 62,500.00* €, commercial: up to 20,000.00* €

For particularly high security demands!

The WT 285 line of production is of especially solid construction with extra strong door and walling.

With an additional swivel wall the series is upgradeable up to 19 rifle holders.

Euro - VdS class I

Model	Overall dimensions (H x W x D) mm	Inner dimensions (H x W x D) mm	Weight kg	Setting height mm	Rifle holders
WT 285-12	1580 x 780 x 630	1430 x 630 x 420	415	1250	6/10
Rifle holders with swivel wall with/without a shelves part:					+5/+9
WT 285-14	1880 x 780 x 630	1730 x 630 x 420	450	1330	6/10
Rifle holders with swivel wall with/without a shelves part:					+5/+9

Cabinet for valuables, entirely multi-walled. Special filling, door thickness even 125 mm. 3-side bolt locking, bolt dia 35 mm, newly developed backbolts, side walls 75 mm. High-security lock. Metal fittings prominent, externally positioned hinges, aperture angle of door 180°. Caused by the extremely strong walling and door construction, the overall dimensions increase accordingly.

WT 285-12 with interior safe, height 180 mm. WT 285-14 with an interior safe 400 mm in height. WT 285-12 and WT 285-14 with unscrewable partition for supplementary reconstruction to a higher setting volume for rifles. WT 285/12-14 is upgradeable by an additional swivel wall to +5/+9 rifle holders. Device for floor anchoring.



WT 285-14



WT 285-12

■ **Special equipment locking variations**

- - Mechanical combination lock
- - electronic pushbutton lock

WT 285
with four-walled special door of 125 mm thickness!

Bolt thickness 35 mm



WT 285-12 /-14
available as a swivel wall safe with up to 19 rifle holders





WT 270-01

with 105 mm door thickness!



New: Mini VdS I cabinet

WT 270-12



WT 270-01

Door safeguarding by extra strong backbolts

HARTMANN RIFLE CABINET SERIES WT 270

Insurance rating, private: up to 62,500.00* €, commercial: up to 20,000.00* €

Safes for valuables of the new generation!

The VdS standard guarantees defined security. Thorough tests and tightened burglary attempts in a testing institute of the VdS precede the stage of production, which itself on the other hand is also subject to a continuous external quality monitoring.

The approval once passed by the VdS is only issued on a fixed term basis, so that the topical threatening situation is taken into account. The series WT 270 distinguishes itself by these high security demands. Regarding dimensions (and, as a result, regarding the pictures) it is of similar construction with the series WT 087 (security grade B) and WT 250 (VdS class N (0)), but has a higher weight.

Euro - VdS class I

Model	Overall dimensions (H x W x D) mm	Inner dimensions (H x W x D) mm	Weight kg	Setting height mm	Rifle holders	Interior safe height mm	Shelves
WT 270-01	1650 x 770 x 500	1530 x 650 x 335	360	1330	7/11	2 à 200	3
WT 270-02.1/.2	1650 x 1350 x 600	à 1530 x 555 x 435	à 360	1330	9/7	200/ 2 à 360	4
WT 270-03	1500 x 700 x 500	1380 x 580 x 335	310	1230	13	150	-
WT 270-04	1500 x 700 x 500	1380 x 580 x 335	320	1230	6	150	3
WT 270-07	1650 x 640 x 500	1530 x 520 x 335	320	1280	8	250	1
WT 270-08	1600 x 990 x 550	1480 x 870 x 385	450	1280	19	200	-
WT 270-09	1600 x 990 x 550	1480 x 870 x 385	465	1280	12/16	200	3
WT 270-10	1650 x 900 x 500	1530 x 780 x 335	410	1330	14/18	2 à 200	-
WT 270-11	1650 x 900 x 500	1530 x 780 x 335	395	1330	14/18	2 à 200	3
WT 270-12	1520 x 500 x 500	1400 x 370 x 335	270	1250	6	150	-
WT 270-20	1650 x 770 x 600	1530 x 650 x 435	380	1320	7/11	2 à 200	3
					Rifle holders with small swivel wall with/without a shelves part	12/16	
					Rifle holders with large swivel wall	20	
WT 270-22	1800 x 770 x 600	1680 x 650 x 440	445	1300	7/11	2 à 370	3
					Rifle holders with small swivel wall with/without a shelves part	12/16	
					Rifle holders with large swivel wall	20	

Multi-walled safe. Strongest construction. Body 60 mm, 3-walled door, thickness 105 mm. Lock area bore-proof against boring, milling and cutting tools. 3-side bolt locking, solid back bolt at the side of the hinges. Aperture angle of door 180°. Edged fire fold surrounding, fire protection insulation. WT 270-01: 7 rifle holders, 3 shelves, partition, 4 additional holders on rail, 2 interior safes, 200 mm each. WT 270-02: 2 separately lockable safe doors! Safe on the left: 16 rifle holders, 9 of which at the back wall, 7 at the swivel wall. Interior safe, 200 mm. Safe on the right: 3 shelves, 2 separate interior safes in file height, 360 mm each. WT 270-08: 15 rifle holders at the back wall, 2 each at the side walls. WT 270-09: 10 rifle holders at the back, 2 at the left side wall, unscrewable partition, on the right space for 3 shelves or 4 more rifle holders. WT 270-10: 14 rifle holders at the back wall, 2 each on the left and on the right. WT 270-11: like WT 270-10, but with unscrewable partition and 3 shelves. Colour: The pictures show the special colour RAL 5003 sapphire-blue (picture above with silver-coloured marbling).

WT 270-20 /-22
available as a swivel wall safe
with up to 20 rifle holders



HARTMANN RIFLE CABINET SERIES WT 297 / 298

WT 297: Insurance rating, private: up to 62,500.00* €, commercial: up to 20,000.00* €

WT 298: Insurance rating, private: up to 100,000.00* €, commercial: up to 50,000.00* €

HARTMANN TRESORE presents rifle cabinets with VdS test and tested fire protection. 2 security standards: Tested burglary and fire protection!

Burglar-proof acc. to VdS class I / VdS class II

Important: VdS-recognized safes have to comply with certain criteria. (see page 3)

Fire security S 60 P

This line of production of safes has passed the fire test at the TU Braunschweig; exposed to flames at 1090 °C over a period of 60 minutes and made subject to a shatter test in still hot condition.

Euro - VdS class I + S 60 P VDMA 24991 RAL-RG 626/7

Model	Overall dimensions (H x W x D) mm	Inner dimensions (H x W x D) mm	Weight kg	Setting height mm	Rifle holders
WT 297-01	1510 x 705 x 470	1420 x 605 x 340	365	1250	6/11

Euro - VdS class II + S 60 P VDMA 24991 RAL-RG 626/7

Model	Overall dimensions (H x W x D) mm	Inner dimensions (H x W x D) mm	Weight kg	Setting height mm	Rifle holders
WT 298-01	1528 x 710 x 493	1389 x 574 x 316	520	1250	6/11

Cabinet for valuables, entirely multi-walled and fire-proof. Door and body solid with a special hard-concrete lining. Total door thickness 105 mm! 4-side bolt locking, gripping into a high-security locking bolt. Special sealing bands against fire gases, water for fire-fighting and heat development, 6 plus 5 rifle holders and 3 plus 3 shelves. Included in the scope of delivery are 2 rails with 1 x 6 and 1 x 5 rifle holders, which you can easily fasten at the back wall, and 6 shelves in total. The partition is fixed. For individual space division several possibilities are open to you (see pictures below). This cabinet is available in VdS class I and VdS class II. WT 297-01: interior safe 170 mm in height. WT 298-01: interior safe 140 mm in height.



WT 297-01
WT 298-01

with tested fire protection

- **Special equipment locking variations**
- - Mechanical combination lock
- - Electronic pushbutton lock

WT 297-01 und WT 298-01 1 cabinet with 4 variations each



WT 297-01 / WT 298-01



tested fire protection



WT 300-05
WT 310-05



WT 300-06
WT 310-06

HARTMANN RIFLE CABINET SERIES WT 300

WT 300: Insurance rating, private: up to 62,500.00* €, commercial: up to 20,000.00* €

WT 310: Insurance rating, private: up to 100,000.00* €, commercial: up to 50,000.00* €

Safes for valuables of the new generation!

The VdS standard guarantees: The safe is homologated and has an exactly defined resistance unit (RU). Before the safe prototype is regarded to be in compliance with the VdS standard, it is made subject to thorough tests and tightened burglary attempts in the testing institute of the VdS. When it is running into production, it will be subject to continuous external quality monitoring.

The approval once passed is only issued on a fixed term basis. Thus, exactly defined security is guaranteed and the topical threatening situation is taken into account. These are the demands that VdS-tested safes have to comply with:

- Homologation in a testing institute recognized by the VdS
- Resistance against considerably aggressive threatening situation following Europe-wide guidelines
- Locking system with resistance unit higher by 50 per cent.
- Only tested, VdS-listed high-security locks may be used

Euro - VdS class I + S 120 P VDMA 24991 RAL-RG 626/7

Model	Overall dimensions (H x W x D) mm	Inner dimensions (H x W x D) mm	Weight kg	Setting height mm	Rifle holders
WT 300-05	1800 x 800 x 550	1515 x 655 x 350	730	1315	10
WT 300-06	1800 x 1400 x 550	1515 x 1255 x 350	1025	1315	17

Euro - VdS class II + S 120 P VDMA 24991 RAL-RG 626/7

Model	Overall dimensions (H x W x D) mm	Inner dimensions (H x W x D) mm	Weight kg	Setting height mm	Rifle holders
WT 310-05	1810 x 821 x 573	1500 x 649 x 331	774	1293	10
WT 310-06	1821 x 1377 x 573	1505 x 1205 x 331	1139	1305	17

Cabinet for valuables, entirely multi-walled. Door and body solid with a special hard-concrete lining. 4-side bolt locking with 12 and 20 bolts, respectively, gripping into a high-security locking bolt. Special sealing bands against fire gases, water for fire-fighting and heat development. Interior safe 200 mm in height.

Tested fire protection

After having been exposed to flames at 1090 °C over a period of 60 or 120 minutes, respectively, the safe is made subject to a shatter test from a height of 9.15 m. Only upon the prototype's passing the test, the safe series will be given the testing badge acc. to RAL-RG 626/7

S 60 P and S 120 P acc. to RAL RG 626/7

Fire-proof rifle cabinets with fire protection tested at the TU Braunschweig. Exposure to flames over a period of one (S 60 P) or two hours (S 120 P), respectively, at 1090 °C with subsequent shatter test.

■ Special equipment locking variations

- - Mechanical combination lock
- - Electronic pushbutton lock

HARTMANN OAK CABINET SERIES WT 181

Choose a rifle cabinet from our extensive product range and, besides, get your custom-made oak cabinet manufactured.

The front, the collar on top and at the bottom as well as the front oak feet are made of solid oak. The sides of the cabinet are part-solid. The door and the sides are manufactured in frame mode of construction with rounded edges. The sides of the front view have three flutings each on the right and on the left.

You got a choice to order the mortised door panels either plane or with 6 different hand-carved motifs (selection see below). Instead of the oak leaves in the centre you have also the possibility to have your personal monogram worked in!

Also for the colour and the staining tone (oak light, dark, brushed, waxed, etc) and the size of your oak cabinet (with one or with two doors) we will comply with your taste and your demands.

Give your cabinet an unmistakable and individual look!



We manufacture your personal oak cabinet custom-made



Motif 1



oak leaves, (alternatively monogram)

Motif 2



capercaillie deer

Motif 3



Motif 4



pheasant duck

Motif 5

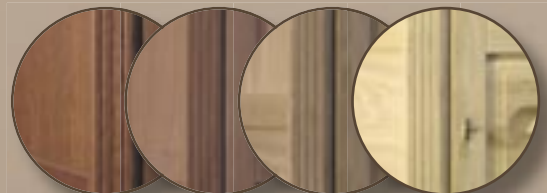


Motif 6



muscovy duck wild boar

■ **Staining specimen**





WS 165 / 175
with extra solid door
of 105 mm thickness

WS 165-02/18
WS 175-02/18



WS 165-02/12
WS 175-02/12



WS 165-01
WS 175-01



K 102-07 K

HARTMANN PISTOL SAFES SERIES WS 165 / 175

WS 165: Insurance rating, private: up to 50,000.00* €, commercial: up to 20,000.00* €

WS 175: Insurance rating, private: up to 64,000.00* €, commercial: up to 20,000.00* €

In cabinets of VdS N (0) and VdS I, long weapons, short weapons and ammunition are permitted to be stored together, without separation by an interior safe!

Resistance unit N (0) with VdS testing badge

Model	Overall dimensions (H x W x D) mm	Inner dimensions (H x W x D) mm	Weight kg	Rifle holders/ Shelves
WS 165-01	670 x 500 x 560	530 x 380 x 400	130	6/2
WS 165-01/12	670 x 500 x 560	550 x 380 x 400	130	12/3
WS 165-02	870 x 500 x 560	750 x 380 x 400	154	6/3
WS 165-02/12	870 x 500 x 560	750 x 380 x 400	154	12/3
WS 165-02/18	870 x 500 x 560	750 x 380 x 400	154	18/3

Euro - VdS Class I

Model	Overall dimensions (H x W x D) mm	Inner dimensions (H x W x D) mm	Weight kg	Rifle holders/ Shelves
WS 175-01	670 x 500 x 560	530 x 375 x 400	143	6/2
WS 175-01/12	670 x 500 x 560	530 x 375 x 400	143	12/3
WS 175-02	870 x 500 x 560	750 x 375 x 400	174	6/3
WS 175-02/12	870 x 500 x 560	750 x 375 x 400	174	12/3
WS 175-02/18	870 x 500 x 560	750 x 375 x 400	170	18/3

Type of construction: Body and door multi-walled, thickness of door 105 mm!, all-round hard armouring, 4-side bolt locking system, door with additional armouring against boring, milling and cutting tools. Construction method: Externally placed hinges, aperture angle of door 180°, double-beard security lock, 2 keys, turn-fold handle, special rifle holders for short weapons up to a length of 400 mm
Optional: electronic combination lock, interior safe

HARTMANN SHORT WEAPON SAFES SERIES K 102 K

Store short weapons in lockable interior safes, separated from the ammunition.

Security grade B acc. to VDMA standard sheet 24992**

Modell	Overall dimensions (H x W x D) mm	Inner dimensions (H x W x D) mm	Weight kg
K 102-06 K	610 x 430 x 400	546 x 366 x 300	66
K 102-07 K	810 x 430 x 400	745 x 365 x 300	82
K 102-51 K	285 x 450 x 380	205 x 380 x 290	35

Double-walled, bolt locking, aperture angle of door 90°



K 102-51 K



K 102-06 K

HARTMANN AMMUNITION SAFES SERIES WS 125

Security grade A acc. to VDMA 24992**

Insurance rating, private and commercial: 2,500.00* €

Security grade A acc. to VDMA standard sheet 24992**

Model	Overall dimensions (H x W x D) mm	Inner dimensions (H x W x D) mm	Weight kg	Height-adjustable shelves
WS 125-01	600 x 380 x 450	594 x 374 x 387	42	1
WS 125-02	600 x 640 x 450	594 x 634 x 387	61	1
WS 125-03	850 x 640 x 450	844 x 634 x 387	80	1
WS 125-04	1406 x 250 x 366	1400 x 244 x 303	81	3
WS 125-05	1406 x 380 x 366	1400 x 374 x 303	82	3
WS 125-06	1406 x 510 x 366	1400 x 504 x 303	104	3
WS 125-07	1406 x 640 x 366	1400 x 634 x 303	122	3

Type of construction: Body single-walled, door double-walled, door leaf solid, bore-proof armouring plate in the lock area, bolt locking system. Construction method: Internally placed hinges, double-beard security lock, 2 keys, height-adjustable shelves. Optional: interior safe, electronic combination lock.

WS 125 Series
for the storage of your
ammunition reserves



WS 125-01



WS 125-02



WS 125-03

HARTMANN TRESORE is
the official supplier
of the DSB
(German Union for
Marksmen)
and its national team



WS 125-04



WS 125-05



WS 125-06



WS 125-07

- **Special equipment locking variations**
- - Mechanical combination lock
- - Electronic pushbutton lock



HPT 4

HARTMANN
strongroom doors ensure
optimum protection for
entire rooms



HARTMANN STRONGROOM DOORS

HARTMANN STRONGROOM DOORS

allow an optimum protection of entire rooms or building sections.

At any place, where, for example, substantial rifle collections or larger quantities of ammunition are intended to be stored secure and in compliance with the law, strongrooms with corresponding tested doors offer a well-appointed solution.

According to your individual demands we offer doors with different dimensions and in 4 different security grades, up to VdS-tested and certified doors with resistance unit VdS III.

Available in numerous security grades!

following security grade B acc. to VDMA standard sheet 24992

Model	Wall breakthrough dim. (H x W x D) mm	Frame overall dim. (H x W x D) mm	Doorway dimensions (H x W x D) mm	Weight kg
HPT 1	1800 x 800	1835 x 930 x 240	1730 x 750	180
HPT 2	1800 x 1000	1835 x 1050 x 240	1730 x 870	195
HPT 3	2000 x 880	2035 x 930 x 240	1930 x 750	195
HPT 4	2000 x 1000	2035 x 1050 x 240	1930 x 870	214

Resistance unit I acc. to Euro VdS standard EN 1143-1

Model	Series HPT VB: The door is, in addition, filled with special concrete.			
HPT V 5 HPT VB 5	1800 x 880	1795 x 870 x 240	1700 x 710	225 340
HPT V 6 HPT VB 6	1800 x 1000	1795 x 990 x 240	1700 x 830	245 375
HPT V 7 HPT VB 7	2000 x 880	1995 x 870 x 240	1900 x 710	240 365
HPT V 8 HPT VB 8	2000 x 1000	1995 x 990 x 240	1900 x 830	260 405

Resistance unit II acc. to Euro VdS standard EN 1143-1

Model				
HPT II 2111	-	2115 x 1100	1964 x 878	800

Resistance unit III acc. to Euro VdS standard EN 1143-1

Model				
HPT III 2111	-	2115 x 1100	1964 x 878	850



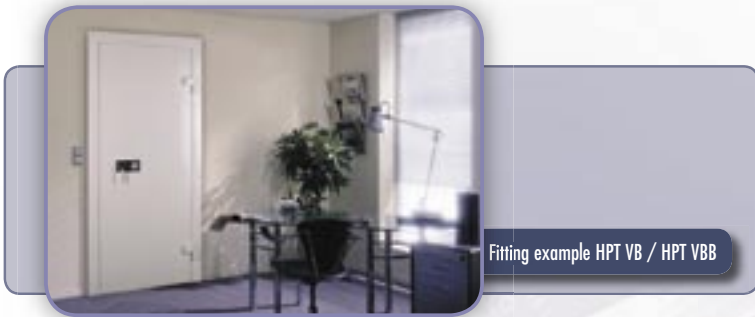
Fitting example HPT 4

HPT series: Construction: double-walled strongroom door, total thickness of door 75 mm, solid bolt locking system. Fitting: The frame is standard-equipped with wall anchors for filling up with masonry/embedding in concrete.

HPT V und HPT VB series: Construction: 4-walled strongroom door, total thickness of door 110 mm, solid bolt locking system, very strong constructed back rail at the side of the hinges over the total door height. Bore-open protected armouring plate in the lock area. Fitting: The frame is standard-equipped with boreholes and wall anchors. You may choose between casting in concrete or anchoring with an existing wall.

HPT II and HPT III series: Construction: Door leave and door frame externally flush, floor frame with a max. threshold height of 15 mm, total thickness of door 152 mm, compact materials strength in front of the locks, including special filling with reinforcement and armour-plating 60 mm, solid bolt locking system. Fitting: The frame is partly concreted over and has to be cast with the wall in a skilled manner. Standard-equipped for an EMA installation.

All models: Locking by means of a double-beard security lock (2 keys included). Aperture angle of door 18°, door folding DIN right.



Fitting example HPT VB / HPT VBB

HARTMANN STRONGROOM DOOR made to measure

If you can't manage with the standard dimensions, we'll gladly submit a fair offer meeting your individual demands.

HARTMANN ROOM-IN-ROOM SYSTEMS

The HARTMANN modular construction offers many advantages compared to the classical strongroom in massive construction.

The HARTMANN room-in-room systems can be fitted in existing rooms in dry construction and without requiring considerable technical effort.

The systems are extremely compact and, as a result, of relatively low weight.

In case of move or relocation the strongrooms in modular construction can be easily dismantled and reinstalled at the new location.

Our specialist consultants will be glad to inform you in detail. Just give us a call!

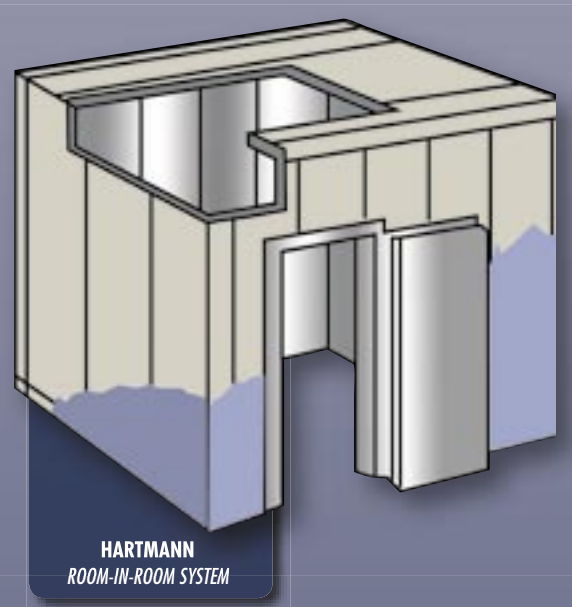
HARTMANN ROOM-IN-ROOM SYSTEMS

Available in certified security grade I, EN 1143-1 with badge, other security grades upon request



HPT II & III

HARTMANN STRONGROOM DOOR made to measure



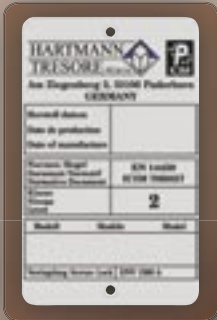
HARTMANN ROOM-IN-ROOM SYSTEM

Bulletproof glass rifle cabinets authorized by the Gun-Control Law

with a decorative interior lighting



HTE 106-01 B



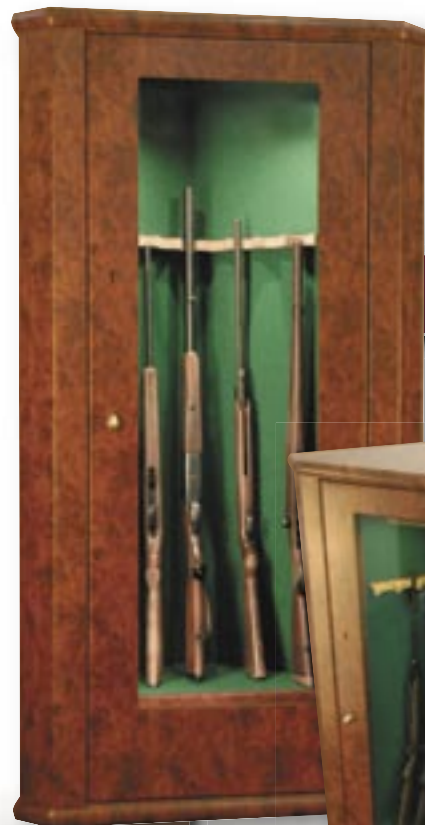
HTE 105-01 B

HARTMANN BULLETPROOF GLASS CABINETS SERIES HTE

The bulletproof glass cabinets in fine wood appearance are part of the *Exclusive Line* of HARTMANN SAFES.

Wide-coverage bulletproof glass panes in the door – and, depending on the model, also at the sides – combined with the corresponding interior lighting put your collections, rifles or other exhibits in a favourable light.

The high-grade strongboxes are certified in accordance with the stringent European standard PREN 14450/2 and PREN 14450/1, respectively, and, according to the gun-control law, comparable with security grade B or A, respectively.



HTE 107-01 B

also available as a corner cabinet



For storage of 7 to 20 long weapons

Secure and representative for your finest weapons



Furnishing example HTE 106-01 B

HARTMANN BULLETPROOF GLASS RIFLE CABINETS

certified acc. to EN 14450 class 1 – authorized by the gun-control law

Model	Overall dimensions (H x W x D) mm	Inner dimensions (H x W x D) mm	Weight kg	Rifle holders	Shelves
HTE 109-01/B	1500 x 450 x 340	1485 x 425 x 265	116	7	1
HTE 109-02/B	1500 x 600 x 340	1485 x 575 x 265	128	10	1

certified acc. to EN 14450 class 2 – authorized by the gun-control law

HTE 104-01/B	1700 x 525 x 348	1660 x 440 x 260	160	7	1
HTE 104-02/B	1700 x 674 x 413	1660 x 590 x 322	206	10	1
HTE 105-01/B	1900 x 820 x 460	1860 x 726 x 372	265	13	1
HTE 106-01/B	1900 x 1220 x 460	1860 x 1126 x 372	400	20	1
HTE 107-01/B	1700 x 910 x 640	1660 x 750 x 530	219	8	1
HTE 108-01/B	1700 x 820 x 460	1660 x 686 x 372	266	12	1

HARTMANN BULLETPROOF GLASS SHOWCASES

HTE 104-01/A	1700 x 525 x 348	1660 x 440 x 260	160	-	4
HTE 104-02/A	1700 x 674 x 413	1660 x 590 x 322	206	-	4
HTE 105-01/A	1900 x 820 x 460	1860 x 726 x 372	265	-	4
HTE 106-01/A	1900 x 1220 x 460	1860 x 1126 x 372	400	-	4
HTE 107-01/A	1700 x 910 x 640*	1660 x 750 x 530*	219	-	4
	* leg dimension	* leg dimension			
HTE 108-01/A	1700 x 820 x 460	1660 x 686 x 372	266	-	4

HARTMANN BULLETPROOF GLASS WALL SAFES

Model	Overall dimensions (H x W x D) mm	Inner dimensions (H x W x D) mm	Weight kg	Rifle holders	Shelves
HTE 110-01	400 x 525 x 160	Glasmaße 180 x 300	33	-	-
HTE 110-02	400 x 700 x 160	Glasmaße 180 x 475	44	-	-

HARTMANN RIFLE CABINETS in fine wood appearance

certified acc. to EN 14450 class 1 – authorized by the gun-control law

Model	Overall dimensions (H x W x D) mm	Inner dimensions (H x W x D) mm	Weight kg	Rifle holders	Shelves
HTE 109-03/B	1500 x 350 x 300	1485 x 325 x 235	76	5	1
HTE 109-04/B	1500 x 500 x 360	1485 x 475 x 300	101	8	1

certified acc. to EN 14450 class 2 – authorized by the gun-control law

HTE 102-01	1500 x 384 x 307	1460 x 300 x 220	110	5	1
HTE 103-01/B	1700 x 525 x 348	1660 x 440 x 260	150	7	1
HTE 103-01/E*	1700 x 525 x 348	1660 x 440 x 260	150	4	3
HTE 103-02/B	1700 x 674 x 413	1660 x 590 x 322	196	10	1
HTE 103-02/E*	1700 x 674 x 413	1660 x 590 x 322	196	5	3
HTE 103-03/B	1900 x 820 x 460	1860 x 726 x 372	276	13	1
HTE 103-03/E*	1900 x 820 x 460	1860 x 726 x 372	276	6	3
HTE 103-04/B	1900 x 1220 x 460	1860 x 1126 x 372	380	20	1

HARTMANN SAFES in fine wood appearance

certified acc. to EN 14450 class 2 – authorized by the gun-control law

HTE 100-01	1000 x 674 x 413	960 x 590 x 322	125	-	2
HTE 100-02	1500 x 384 x 307	1460 x 300 x 220	110	-	4
HTE 100-03	1700 x 525 x 348	1660 x 440 x 260	150	-	4
HTE 101-01	1700 x 674 x 413	1660 x 590 x 322	196	-	4
HTE 101-02	1900 x 820 x 460	1860 x 726 x 372	280	-	4
HTE 101-03	1900 x 1220 x 460	1860 x 1126 x 372	385	-	4

* fig. n/a: rifle cabinets with combined interior (rifle holders, partition and shelves)



HTE 110-01

HARTMANN BULLETPROOF GLASS WALL SAFES
with lighting, for the storage of
exclusive unique specimen

■ For your rifle cabinet or showcase,
choose the tone of wood or the
colour that perfectly fits for your
furnishings and your ambience.



nut wood appearance



cherry wood appearance



root wood appearance



dark grey



light grey



**electronic lock
SERIES HTE**



HTE 110-02

HARTMANN BULLETPROOF GLASS WALL SAFES SERIES HTE 110

HARTMANN BULLETPROOF GLASS WALL SAFES with lighting are perfect for the presentation of your most exclusive unique specimen. Don't hide your collections any more.



HTE 110-01



Secure and representative for your finest weapons

Furnishing example HTE 106-01 B

Safes
authorized by the
Gun-Control Law

in fine wood
appearance

HARTMANN SAFES SERIES HTE



HTE 100-01 B



HTE 102-01

HARTMANN BULLETPROOF GLASS CABINETS SERIES HTE



HTE 108-01 A

HTE 108-01 B

with decorative interior lighting

The bulletproof glass showcases are equipped with glass bottoms and are particularly suitable for the storage of exclusive short weapons.
HTE 108-01 A / B
with lateral glazing



HTE 104-01 B



HTE 109-02 B



HTE 109-01 B

■ Bulletproof rifle cabinets authorized by the Gun-Control Law





HARTMANN AIRBRUSH SAFES

Get your very personal safe or rifle cabinet designed.

Our airbrush artist knows his business and will create a real eyecatcher based on your guidelines with your personal dream motif! Just choose a safe or rifle cabinet from our substantial range, meeting your ideas and demands as far as size and security grade are concerned, and hand over to us a picture or pattern with your favourite motif. On your request, we will offer an individual solution for the interior as well with the precious inside furnishings made of wood.



HARTMANN AIRBRUSH SAFES
with your personal dream motif



HARTMANN SAFES

HARTMANN LONG WEAPON SAFES

with pull-out trays and extravagant design for particularly careful and representative storage of your weapons



HARTMANN ART SAFES



HARTMANN PISTOL SAFES

HARTMANN LONG WEAPON SAFES

with wooden panelling and lighting



HARTMANN HIGH-POLISH GUN SAFES



HARTMANN HIGH-POLISH SAFES

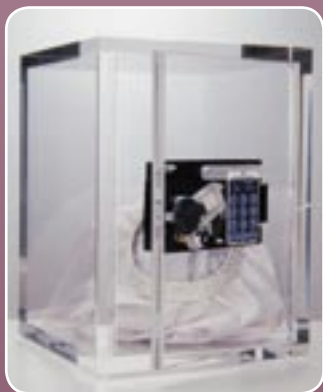
Please do not hesitate to ask for further information on the products presented!



HARTMANN FIRE SAFES

HARTMANN ACRYLIC GLASS SAFES

Particularly for trade fairs, exhibitions, and other events the acrylic glass safe is used with pleasure for the presentation of exclusive products or for price games and drawing of lots. Upon request, the safe can be rented.



HARTMANN REAL WOOD SAFES



HARTMANN ROOMSAFES



HARTMANN KEY CABINETS



HARTMANN DEPOSIT SAFES

■ PRODUCTS

- Business safes
- Private safes
- Fireproof safes
- Wall safes
- Rifle cabinets
- Data media safes
- File safes
- Furniture safes
- Hotel safes
- Key safes
- Strongroom doors
- Airbrush safes
- Second-hand safes
- Bank technology

■ PERFORMANCES

- All security grades
- All sizes
- All colours
- Special designs

■ SERVICE

- Advisory service on the spot
- Disposal of used safes
- Relocation
- Emergency help in case of burglary
- Damage expertise
- Rental safes
- Leasing and financing

Locking variations and metal fittings

Our rifle cabinets are standard-equipped with a double-beard high-security lock with two double-beard keys.

We like to present here a short overview on the various locks and metal fittings. However, we draw your attention to the fact that not all types of rifle cabinets and safes can be combined or equipped, respectively, with all locks or metal fittings!

Our specialist consultants will be glad to inform you!

The locking device for the interior safe

consists as a standard version of an interior-safe lock with 2 keys. As special equipment for most of the safes of security grade B and the VdS classes N (0) to II also a mechanical combination lock is available.

Special colours

Unless otherwise indicated in the respective description of the series, our rifle cabinets are given the colour light grey (RAL 7035) as a standard. Upon request, you may choose from the entire RAL range of colours at low extra cost.



Interior safes

Supplementary interior safes are possible for a great deal of models. Just ask one of our specialist consultants!



The special equipment

for your Hartmann rifle cabinet you should order best when ordering the cabinet itself. For any questions that might not have been taken into consideration right here, please give us a call. We will be glad to fulfil your request.

Safe drawers and overhead safes



HARTMANN ammunition drawers



HARTMANN overhead safes

Car safes



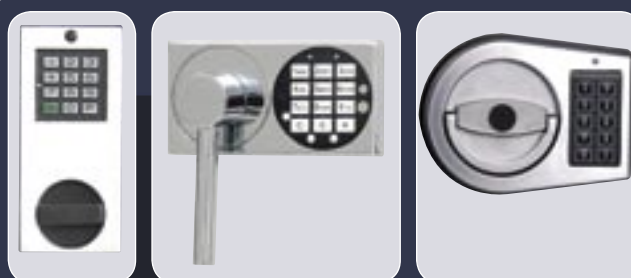
HARTMANN car safes



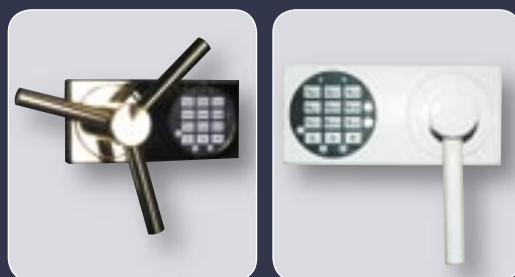
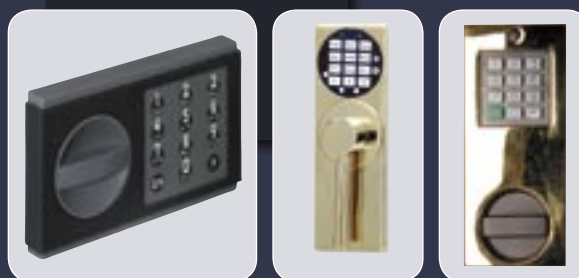
HARTMANN double-beard locks
(Selection with various metal fittings)



HARTMANN mechanical combination locks
(Selection with various metal fittings)



HARTMANN electronic locks
(Selection with various metal fittings)



Excerpt from the Law on the revision of the gun-control law

dated October 11, 2002 – excerpt from § 36 WaffG 2002

Storage of weapons and ammunition

(1) Anyone being in possession of weapons or ammunition is obliged to take precautions in order to avoid that any such objects get lost or are taken by unauthorized third parties. Firearms exclusively have to be stored separated from the ammunition, provided not being stored in a safety receptacle at least in conformity with standard DIN/EN 1143-1 resistance unit 0 (as of May, 1997) or any standard with the same protection level of another member state having signed the agreement on the European Economic Area (EEA member state).

(2) Firearms not being subject to release from permission obligation and prohibited weapons have to be stored in a receptacle at least in conformity with standard DIN/EN 1143-1 resistance unit 0 (as of May, 1997) or a receptacle of the same standard; as such are considered in particular receptacles of safety grade B acc. to VDMA 2) 3) 24992 (as of May, 1995). For up to ten long weapons safe storage shall be considered guaranteed also in a receptacle in accordance with safety grade A acc. to VDMA 24992 (as of May, 1995) or a standard with the same protection level of another EEA member state. Rooms with comparable protection shall be considered to be of the same standard.

(3) Upon request, anyone being in possession of firearms, ammunition or prohibited weapons shall be obliged to prove the precautions taken for safe storage at the competent public authority. In case of reasonable doubts regarding safe storage the public authority is entitled to demand the owner to give access to the place of storage for verification of fulfillment of the safety requirements. Access to living quarters against the proprietor's will is only within the law for reasons of prevention against urgent endangering of public safety. In so far, the fundamental right of inviolability of living quarters (Article 3 of the German Constitution) is restricted.

(4) If the previous and present storage of weapons or ammunition, the acquisition and possession of which being subject to permission, is not in conformity with this law or the demands as set forth in a statutory instrument following paragraph 5, the proprietor shall be obliged to take the supplementary precautions in order to ensure a storage in conformity with these demands till August 31, 2003 at the latest. The respective precautions shall have to be reported and proved towards the competent public authority.

For further information on the gun-control law and the statutory instrument see www.waffenschraenke.de

HARTMANN TRESORE is
the official supplier of the
DSB (German Union
for Marksmen) and
its national team 

Federal Border Guard Office Cologne
Fed. Border Guard Off. Weil am Rhein
Fed. Border Guard Office Cologne Cologne
Fed. Border Guard Headquarters Sankt Augustin
Fed. Border Guard Office Kleve Kleve
Fed. Border Guard Office Flensburg Flensburg
Fed. Police Headquarters Munich

German Research and Examination
Inst. for hunting/sporting weapons Altenbeken
SFG-Sportförderungsgesellschaft Wiesbaden

Fed. Forestry Office Lübberstedt Axstedt
Forestry Office Lüdenscheid Lüdenscheid
Federal Forestry Office Möser Möser
Forestry Office Ludwigslust Kummer/Ludwigslust
Forestry Office Canow Malliß
Forestry Office Grabow Kremmin
Federal Forestry Office Munster
Forestry Office Kandel Kandel i.d. Pfalz
Federal Forestry Office Klietz Klietz
Forestry Off. Lower Saxony Uslar Uslar
Forestry Office Riefensbeek Osterode a. Harz
Federal Forestry Office Senne Bad Lippspringe
Forestry Off. of Lower Saxony Uslar
Fed. Forestry Off. Warnerheide Troisdorf
Fed. Forestry Off. Spakeler Heide Damme
Forestry Office Jestetten Jestetten
Forestry Off. of L. S. Saupark Springe
State Forestry Office Titisee-Neustadt
Forestry Office of Lower Saxony Hude
Town Forestry Office Brilon Brilon
Town Forestry Office Göttingen Göttingen
Town Forestry Office Forstrevier Hannover
Forestry Administration Parsau
Forestry Office Creuzburg Creuzburg
Forestry Office Bad Hersfeld Bad Hersfeld
Federal Forestry Office Hintersee Hintersee
Forestry. Off. of L. S. Currenzien Stapel
Federal Forestry Office Lübtheen Lübtheen
Forestry. Off. of L. S. Currenzien Neuhaus / E.
Forestry Office Sankt Blasien Sankt Blasien
Forestry Office Koblenz Koblenz
Land Forestry Off. of Lower Saxony Dassel

Police Headquarters Essen
Criminal Investigation Dept. Schwelm
Police Headquarters Cologne Cologne
Land Police Administration Karlsruhe
Police Headquarters Bielefeld Bielefeld
Police Headquarters Bonn Bonn
Police Headquarters Oberhausen Oberhausen
Police Headquarters Essen Essen
District Police Auth. Meschede Meschede
Police Shooting Association Paderborn
Police Headquarters Trier Trier
Police Headquarters Mainz Mainz
District Police Auth. Schwelm Schwelm
Police Administration CCD Stendal
Police Headquarters Münster Münster
Police Headquarters Chemnitz Chemnitz
Police Sports Club Linnich Linnich
Police Headq. Lower Bavaria Regensburg
Police Headquarters Frankfurt/Main Frankfurt/Main

District Police Authority Kleve Kleve
Police Academy Freiburg
Police Station Meckenheim Meckenheim
Police Authorities for Technology Hannover
Police Headquarters Cologne Cologne (Kalk)
Municipal Authorities Bad Rappenau
Police Administration Freudenstadt Freudenstadt
Police Sporting Association of 1920 e.V.(sporting huntsmen dept.) Hamburg
Police Headquarters Koblenz Koblenz
Police Administration Calw Calw
Police Roesfeld Raesfeld
District Police Authorities Olpe Olpe

National Building
Authorities Wesel Wesel
National Building
Construction Office Ansbach Ansbach
National Building
Construction Office Kempten Kempten
City of Landshut
Building Construction Office Landshut
National Building
Construction Office Ingolstadt Ingolstadt
National Building
Construction Office Bad Kissingen
German Armed Forces Kalkar Kalkar
Garrison Administration Berlin Berlin
Service Center of the German Armed Forces Erfurt Erfurt

Bavarian Hunting Association Oberviechtach
Hunting School Gut Grambow Grambow
Regional Hunting Assoc. NRW e.V. Dortmund
Regional Hunting Assoc. RP e.V. Gensingen
Regional Hunting Assoc Hamburg e.V. Hamburg

Rifle Association Olympia Wilhelmshaven
Olympia Shooting Range Garching
German Union of Marksmen e.V. Wiesbaden
Bavarian Union of Sport. Marksmen Garching
Rhineland Union of Marksmen Leichlingen
Westphalian Union of Marksmen Dortmund
NW German Union of Marksmen Bassum
North German Union of Marksmen Kiel
Association of Military and Police Marksmen (BDMP) e.V. Paderborn
Association of Sporting Marksmen of Lower Saxony e.V. Wunsdorf
Sport Pistol and Rifle Club Pulheim
Regional Sport Union NS e.V. Hannover
Sportpark GmbH Solingen
Shooting Association Ostheim Cologne
Shooting Club Benningsen Springe
Sport. Marksmen Club Untertürkheim Stuttgart
Shooting Association Detmold Lemgo
Sporting Marksmen Club Edlingen Dischingen
TSG Sports Association Bad Wurzach
GTV Shooting department Bremerhaven



HARTMANN TRESORE AG & Cie.



HEADQUARTERS

Am Ziegenberg 3
D-33106 Paderborn
Germany
Phone +49 (0) 52 51 - 17 44 -0
Fax +49 (0) 52 51 - 17 44 -99
paderborn@hartmann-tresore.de



BRANCH OFFICE HAMBURG

Vorsetzen 41
D-20459 Hamburg
Phone +49 (0) 40 - 36 90 54 -30
Fax +49 (0) 40 - 36 90 54 -59
hamburg@hartmann-tresore.de



BRANCH OFFICE BERLIN

Kurfürstendamm 63
D-10707 Berlin
Phone +49 (0) 30 - 88 70 87 -70
Fax +49 (0) 30 - 88 70 87 -89
berlin@hartmann-tresore.de



BRANCH OFFICE DÜSSELDORF

Graf-Adolf-Strasse 70
D-40210 Düsseldorf
Phone +49 (0) 2 11 - 17 93 73 -49
Fax +49 (0) 2 11 - 17 93 73 -50
duesseldorf@hartmann-tresore.de



BRANCH OFFICE COLOGNE

Hohenstaufenring 48-54
D-50674 Cologne
Phone +49 (0) 2 21 - 8 20 18 -20
Fax +49 (0) 2 21 - 8 20 18 -28
koeln@hartmann-tresore.de

www.waffenschraenke.de
info@waffenschraenke.de